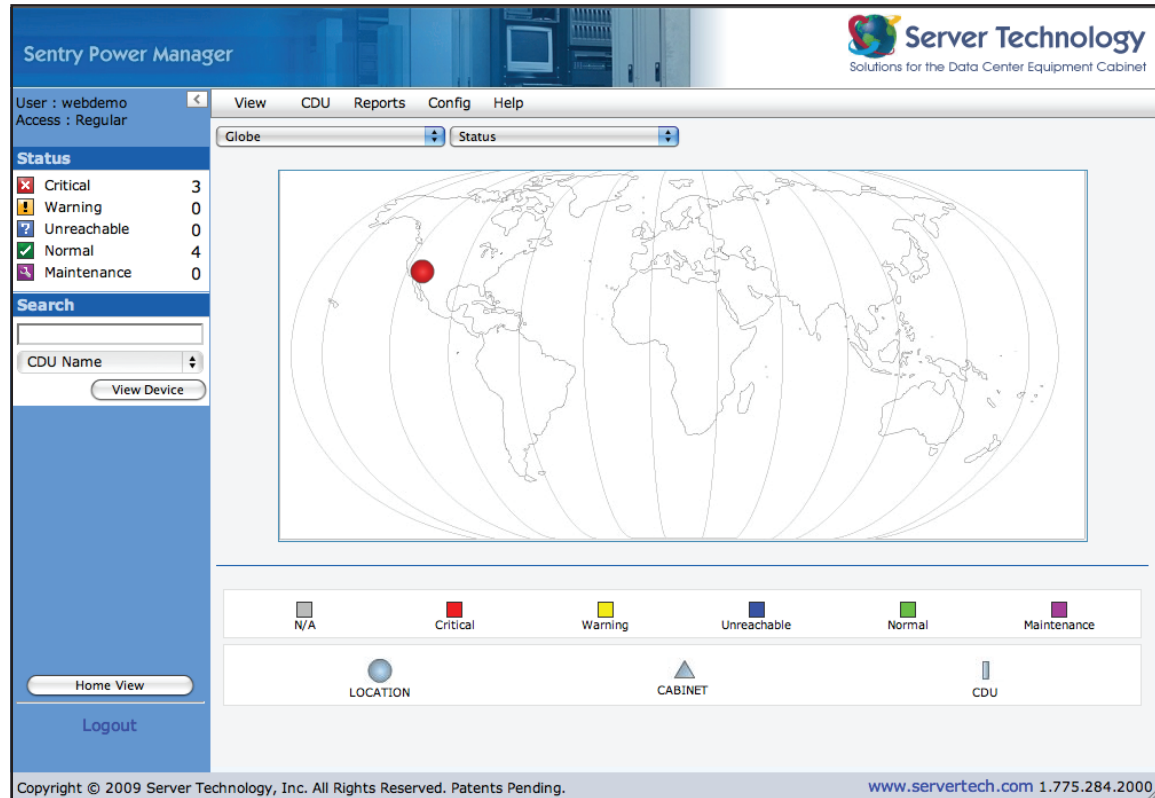


# Sentry™ Power Manager

## Manage Multiple Cabinet Power Distribution Units (CDUs) in Multiple Locations

### Key Features

- > View your entire network of CDU's from a global view down to the rack level
- > Auto-Discovers all your Sentry CDU devices connected to your IP network
- > Access Interface via Standard Network Browser
- > Outlet Grouping and Clusters: Group or Cluster outlets for remote reboot and power measurement information on a single CDU, across linked CDU's, or across IP addresses
- > Determine Efficiency Metrics: PUE and DCiE from The Green Grid and SI-POM and H-POM for The Uptime Institute
- > Logs: discovery, user login, user actions, alarm status
- > Trending: Graph temperature, humidity, infeed load, infeed power, system watts/unit area & system total power
- > Integrated Remote Management of Sentry CDU's to cycle power and reboot selected devices
- > Local and global alarm notification and acknowledgement
- > Real-time alarm notification
- > Multiple Views: Status, current load, power, temperature, humidity & capacity
- > Ability to import background images
- > Multiple user levels and permissions including support for LDAP
- > Monitor and View Environmental Status



Sentry Power Manager

User : webdemo  
Access : Regular

View CDU Reports Config Help

Globe Status

Status	Count
Critical	3
Warning	0
Unreachable	0
Normal	4
Maintenance	0

Search

CDU Name

View Device

Home View

Logout

LOCATION CABINET CDU

Copyright © 2009 Server Technology, Inc. All Rights Reserved. Patents Pending. [www.servertech.com](http://www.servertech.com) 1.775.284.2000

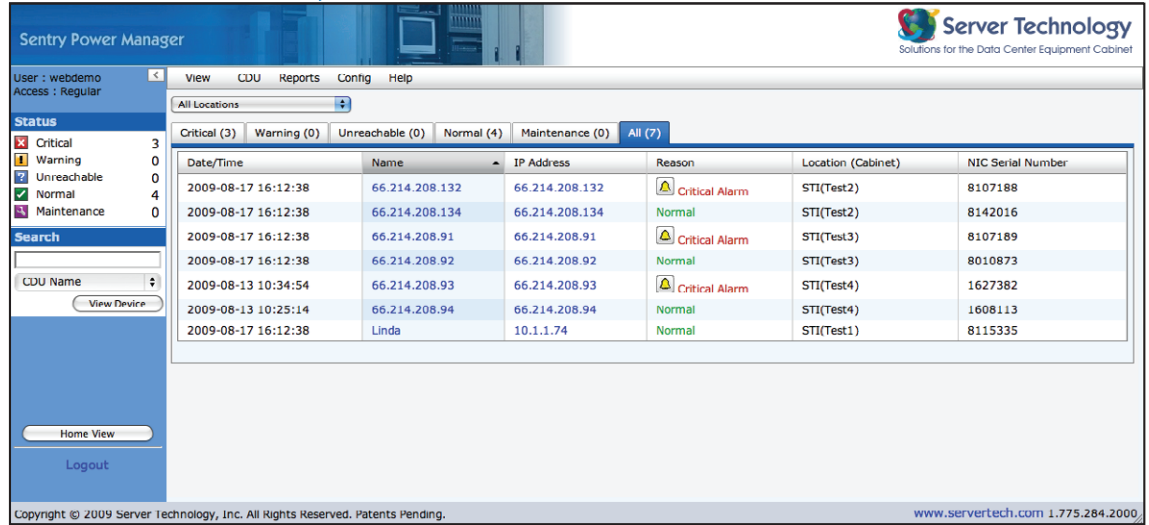
### 'Quickly drill down from a global view to the rack level'

Do you have multiple Sentry™ CDUs in one or more locations that you would like to access from one central point? Would you like one central location where all alarms can be viewed and logged for reporting, e-mail or SNMP trap notifications? No problem!

Our Sentry Power Manger (SPM) product is capable of monitoring and managing multiple Sentry devices in IP-based enterprise networks. SPM provides a global view of all Sentry CDUs with the ability to view devices based on their temperature, humidity, current and device status. Besides managing and monitoring all alarm conditions, this information can also be used to provide reporting and trending information for display within SPM or integrated with your existing Building Management System (BMS).

### Real-time active alarm system

- > Monitor all active alarms within Sentry Power Manager
- > Monitor and manage CDU's from within SPM



**Sentry Power Manager**

User: webdemo Access: Regular

Status Summary:

- Critical: 3
- Warning: 0
- Unreachable: 0
- Normal: 4
- Maintenance: 0

Date/Time	Name	IP Address	Reason	Location (Cabinet)	NIC Serial Number
2009-08-17 16:12:38	66.214.208.132	66.214.208.132	Critical Alarm	STI(Test2)	8107188
2009-08-17 16:12:38	66.214.208.134	66.214.208.134	Normal	STI(Test2)	8142016
2009-08-17 16:12:38	66.214.208.91	66.214.208.91	Critical Alarm	STI(Test3)	8107189
2009-08-17 16:12:38	66.214.208.92	66.214.208.92	Normal	STI(Test3)	8010873
2009-08-13 10:34:54	66.214.208.93	66.214.208.93	Critical Alarm	STI(Test4)	1627382
2009-08-13 10:25:14	66.214.208.94	66.214.208.94	Normal	STI(Test4)	1608113
2009-08-17 16:12:38	Linda	10.1.1.74	Normal	STI(Test1)	8115335

Copyright © 2009 Server Technology, Inc. All Rights Reserved. Patents Pending. [www.servertech.com](http://www.servertech.com) 1.775.284.2000

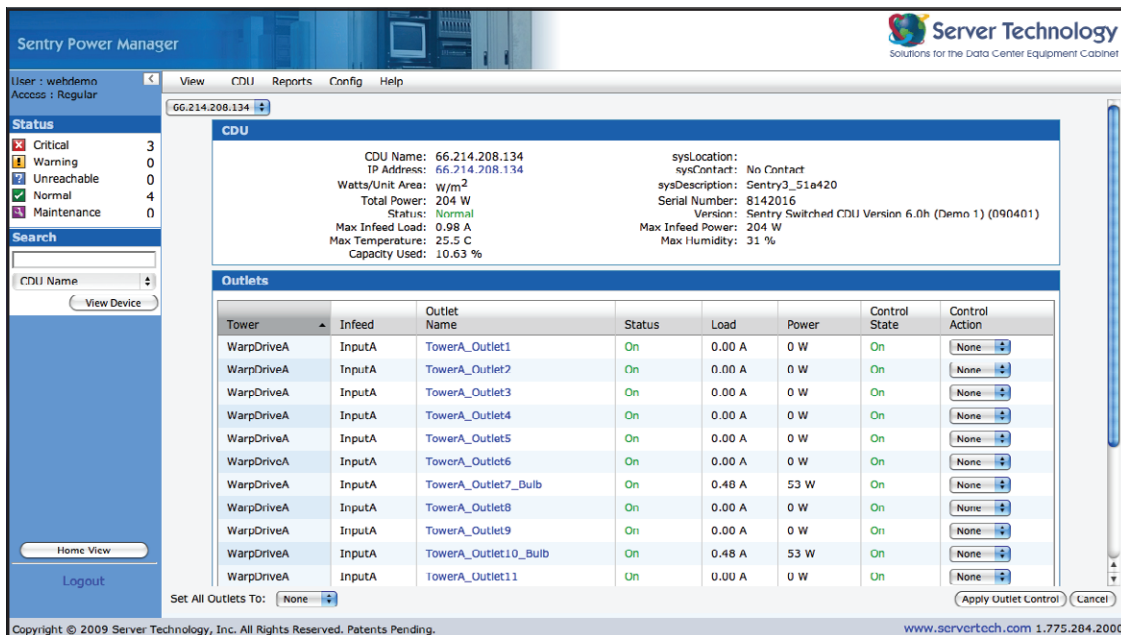
- > Quickly drill down from global view to rack-level



Copyright © 2009 Server Technology, Inc. All Rights Reserved. Patents Pending. [www.servertech.com](http://www.servertech.com) 1.775.284.2000

- > View cabinet level information including:
  - Total Power
  - Power Density
  - Temperature
  - Humidity
  - Capacity Used

### View cabinet conditions from one screen



**Sentry Power Manager**

User: webdemo Access: Regular

CDU: 66.214.208.134

Summary:

- CDU Name: 66.214.208.134
- IP Address: 66.214.208.134
- Watts/Unit Area: W/m<sup>2</sup>
- Total Power: 204 W
- Status: Normal
- Max Infeed Load: 0.98 A
- Max Temperature: 25.5 C
- Capacity Used: 10.63 %

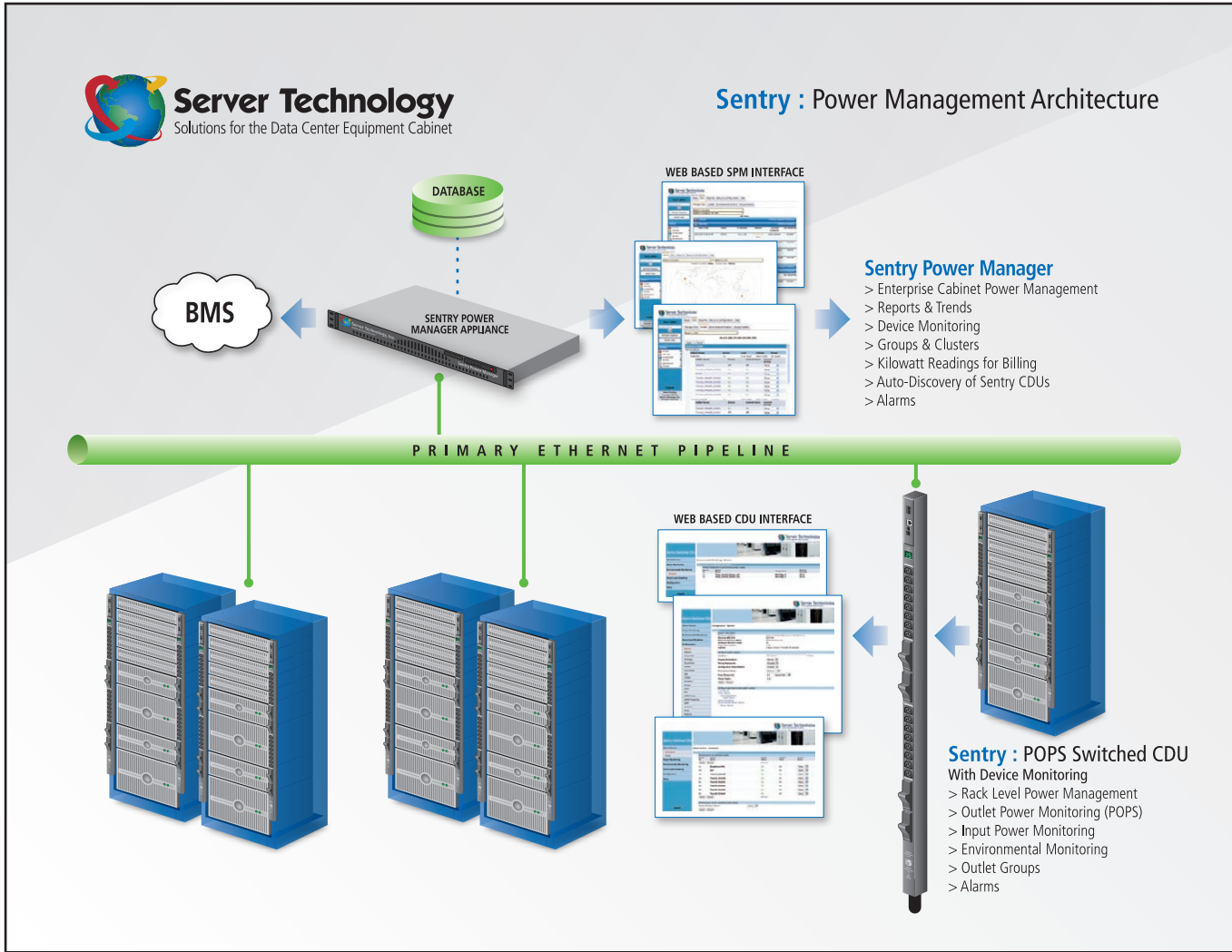
sysLocation: No Contact  
sysContact: No Contact  
sysDescription: Sentry3\_51a#20  
Serial Number: 8142016  
Version: Sentry Switched CDU Version 6.0h (Demo 1) (090401)  
Max Infeed Power: 204 W  
Max Humidity: 31 %

Tower	Infeed	Outlet Name	Status	Load	Power	Control State	Control Action
WarpDriveA	InputA	TowerA_Outlet1	On	0.00 A	0 W	On	None
WarpDriveA	InputA	TowerA_Outlet2	On	0.00 A	0 W	On	None
WarpDriveA	InputA	TowerA_Outlet3	On	0.00 A	0 W	On	None
WarpDriveA	InputA	TowerA_Outlet4	On	0.00 A	0 W	On	None
WarpDriveA	InputA	TowerA_Outlet5	On	0.00 A	0 W	On	None
WarpDriveA	InputA	TowerA_Outlet6	On	0.00 A	0 W	On	None
WarpDriveA	InputA	TowerA_Outlet7_Bulb	On	0.48 A	53 W	On	None
WarpDriveA	InputA	TowerA_Outlet8	On	0.00 A	0 W	On	None
WarpDriveA	InputA	TowerA_Outlet9	On	0.00 A	0 W	On	None
WarpDriveA	InputA	TowerA_Outlet10_Bulb	On	0.48 A	53 W	On	None
WarpDriveA	InputA	TowerA_Outlet11	On	0.00 A	0 W	On	None

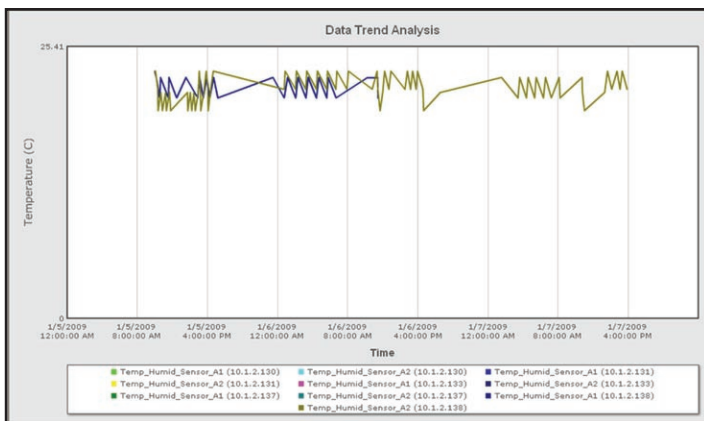
Set All Outlets To: None

Copyright © 2009 Server Technology, Inc. All Rights Reserved. Patents Pending. [www.servertech.com](http://www.servertech.com) 1.775.284.2000

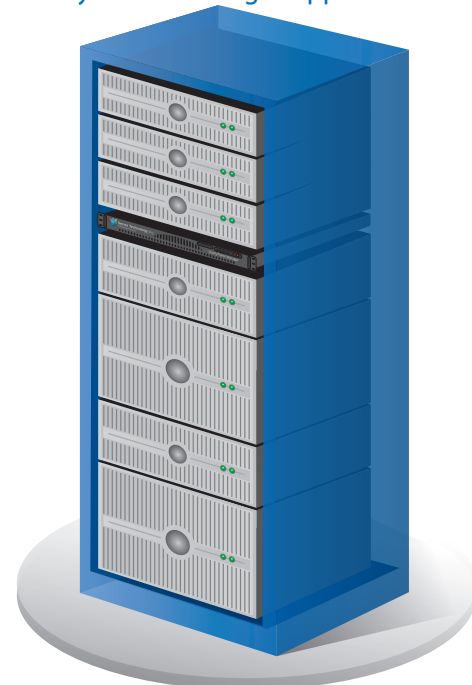
Power Information and Management



Trends/ Graphs:



Sentry Power Manager Appliance



## Technical Specifications

### Ease-of-Use:

- > Auto-discovers each CDU for easy configuration
- > Easily create a user interface that mirrors the physical deployment of the data center
- > Quickly drill down from a global perspective to the rack's actual physical location for power and environmental information or if there is a problem (quickly identify the alarm and the physical location of the CDU)

### Multiple Reporting Options:

- > Reporting capabilities to produce reports on critical management parameters such as a temperature, humidity, current load and energy consumption
- > Reports on Current and Power providing the power consumption of each input, total for the rack and/or per square foot (meters) of the rack

### Trends/Graphs:

- > Period: 24-hours to 3 years
- > Create trends based on Temperature, Humidity, In-feed Load, In-feed Power, System Watts/unit area, and System Total Power
- > Up to 12 parameters can be shown on a single trend

### On-Demand Accessibility:

- > Real-time view of all active system alarms
- > Anytime, anywhere web-based views
- > Manage thousands of CDUs from a single console

### Appliance Based Architecture:

- > Form Factor: 1U
- > Processor: Intel Core 2 Duo 2.33GHz
- > Memory: DDR2 2GB
- > Hard Drive: 250GB

### Compatibility:

- > Server Technology Sentry CDUs with firmware 5.3x or later

### Groups and Clusters:

- > Create Groups to Group outlets per device, groups of devices (application), or per cabinet
- > Create Clusters to group outlets across IP addresses (cabinets), rows of cabinets or the whole Data Center
- > Groups and Clusters can be used to reboot or power down a single device or a row of cabinets
- > Power information can be provided for billing per Group and Clusters such as kW and kW-h for a single device, groups of devices, a cabinet, rows of cabinets or the whole data center
- > kW Information can be used to determine data center efficiency metrics like PUE and DCiE from The Green Grid

### Web Browsers Supported:

- > Microsoft Internet Explorer 7.0 or later
- > Mozilla Firefox 1.5 or later



## Server Technology

HEADQUARTERS - NORTH AMERICA

Server Technology, Inc.  
1040 Sandhill Drive  
Reno, NV 89521  
United States  
1.775.284.2000 Tel  
1.775.284.2065 Fax  
sales@servertech.com  
www.servertech.com  
www.servertechblog.com

EMEA

Server Technology Intl  
Sienna Court  
The Broadway  
Maidenhead  
Berkshire  
SL6 1NJ  
United Kingdom  
+44 (0) 1628 509053 Tel  
+44 (0) 1628 509100 Fax  
salesintl@servertech.com

APAC

Server Technology Intl  
37th Floor, Singapore Land Tower  
50 Raffles Place  
Singapore 048623  
+65 (0) 6829 7008 Tel  
+65 (0) 6234 4574 Fax  
salesintl@servertech.com