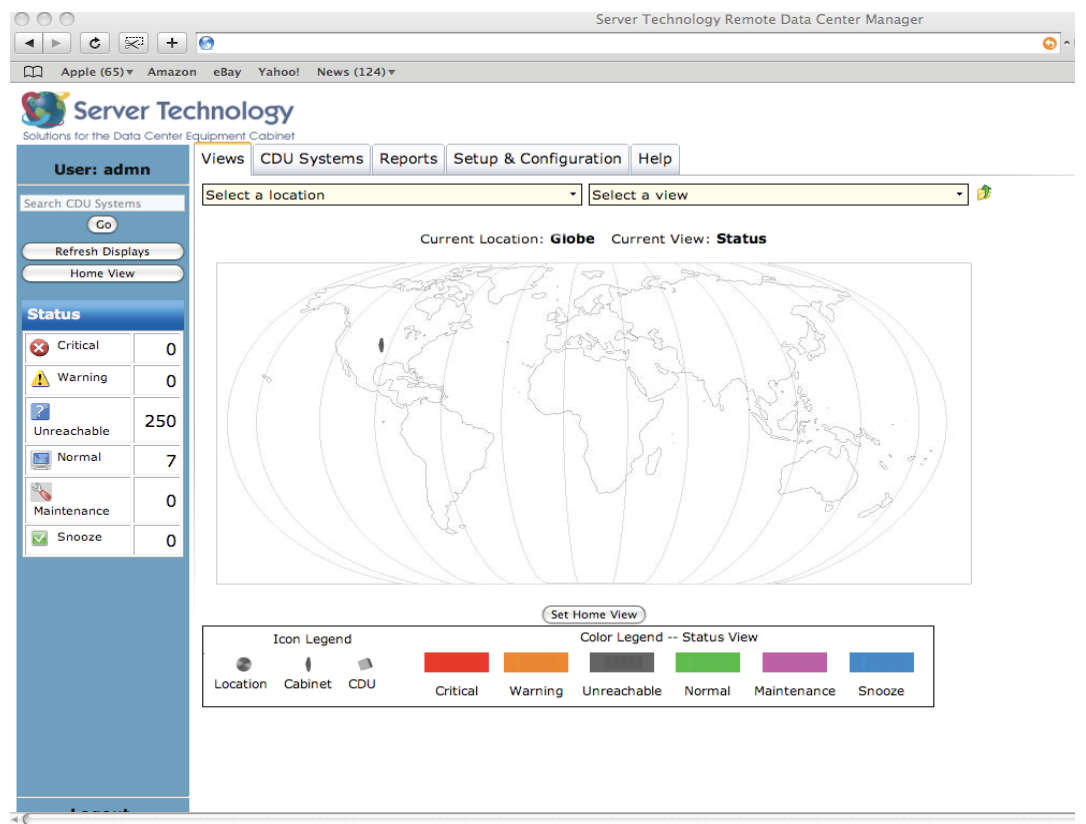


Sentry™ Power Manager

Key Features

- > View your entire system of CDU's from a global view down to the rack level
- > Auto-Discovers all your Sentry CDU devices
- > Access via Standard Network Browser
- > Outlet Clusters - Group outlets within a CDU, across linked CDU's or across IP addresses
- > Logs: Log by start & end date include discovery, user login, user actions, alarm status
- > Trending: Graph using a start & end date temperature, humidity, infeed load, infeed power, system watts/unit area & system total power
- > Integrated Remote Management of Sentry CDU's to cycle power and reboot selected devices
- > Simple and easy to understand alarm notification and acknowledgement
- > Real-time alarm notification
- > Multiple Views: Status, current load, power, temperature, humidity & capacity
- > Email notifications via the CDU when events occur
- > SNMP traps sent via the CDU when events occur
- > Ability to import images
- > Multiple user levels and permissions

Manage Multiple Cabinet Power Distribution Units (CDUs) in Multiple Locations



'Quickly drill down from a global view to the rack level'

Do you have multiple Sentry™ CDUs in one or more locations that you would like to access from one central point? Would you like one central location where all alarms can be viewed and logged for reporting, email or SNMP trap notifications? No problem!

Our Sentry Power Manger (SPM) product is capable of monitoring and managing multiple Sentry devices in IP-based enterprise networks. SPM provides a global view of all Sentry CDUs along with the ability to view devices based on their temperature, humidity, current and device status. Besides managing and monitoring all alarm conditions, this information can also be used to provide reporting and trending information.

Technical Specifications

Event Notification

- > Email notification via the CDU to multiple recipients when an event occurs
- > SNMP traps via the CDU when an event occurs

Ease-of-Use

- > Auto-discovers each CDU for easy configuration
- > Easily create a user interface that mirrors the physical deployment of the data center
- > Quickly drill down from a global perspective to the rack's actual physical location if there is a problem (quickly identify the alarm and the physical location of the CDU)
- > Create outlet clusters to group outlets within a CDU, across linked CDU's or across enterprise locations

Multiple Reporting Options

- > Reporting capabilities to produce reports on critical management parameters such as temperature, humidity and current load
- > Reports on Current and Power providing the power consumption of each input, total for the rack and/or per square foot of the rack

On-Demand Accessibility

- > Real-time view of all active system alarms
- > Anytime, anywhere web-based views
- > Manage thousands of CDUs from a single console

Compatibility

- > Server Technology Sentry CDUs with firmware 5.3x or later

Web Browsers Supported:

- > Microsoft Internet Explorer 6.0 or later
- > Mozilla Firefox 1.5 or later
- > Opera 9.0 or later
- > Apple Safari 2.0 or later

Supported Databases:

- > SQL Server 2005
- > SQL Server 2005 Express



marketing@dafnia.com
www.dafnia.com

UAE ABU DHABI +971 2 5557351 DUBAI +971 4 3352995 JAFZA +971 4 8831401

OMAN MUSCAT +968 24 750205

QATAR DOHA +974 44150543