



FLEXIBLE • VERSATILE • LIGHTWEIGHT • DURABLE

CARSON
INDUSTRIES, LTD.

Railduct
system

Introducing Railduct System - the concrete replacement technology for installation of trackside signalling, fibre optic and telecommunications cable systems for railway and light railway projects. This system is based on forty years experience in the design and manufacture of structural foam plastic ducting and underground enclosures.

Railduct system consists of 4/6/9 way ductbank system, 200 types of underground enclosures, and 250mm profile interlocking channel. Other profiles may be added to the range. Together, these components of the Railduct system offer the total engineering solution for high quality, high speed, lower cost railway infrastructure installations.



THE MANY FEATURES OF THE RAILDUCT SYSTEM INCLUDE:

COST SAVINGS/ EASY TO HANDLE

Railduct weighs 14 kilos per unit, compared with a weight of over 120 kilos for concrete of similar dimensions providing faster and cheaper installation..

STRENGTH

Railduct design, with reinforced ribbing, coupled with our structural foam moulding technology, offers components which meet load requirements of up to 60 KN. EN 124 - B125 load specifications for platform areas can be met when Railduct is fitted with a suitable cast steel or ductile cover.

DURABILITY

Carson Industries have installed in excess of 30 million underground enclosures and 30 million metres of ductbank in demanding U.V. and chemical environments worldwide. This 40 years of knowledge and experience has been applied to the design of the Railduct System. Components are manufactured in High Density Polyethylene (HDPE) using the unique structural foam process, giving decades of trouble free installation.

DESIGN

Railduct Channel is designed to offer a number of engineering solutions. As a result, the components can be buried in trackside ballast as per existing concrete channel, elevated on posts, and fixed to embankments and tunnel walls. It is also designed to interlock with our wide range of underground enclosures and ductbank. The patented interlocking mechanism is designed to allow semi-automatic laying on long runs using existing track laying machinery (patent pending).

RANGE

MultiDuc may be offered in up to 4-6-9 way and with a broad range of accessories. Carson Industries manufactures vaults ranging from 0.4x0.3m to 2x3m and with a multitude of heights depending on customer requirements.

SECURITY

Railduct Channel can be fitted with a hinged and lockable cover, complete with tamper-proof bolt mechanism. As the interlocking mechanism between the components is buried completely during installation, Railduct cannot be disassembled by any vandals.

RECYCLABLE

All of the polymer materials used in the Railduct System are 100% recyclable.

QUALITY

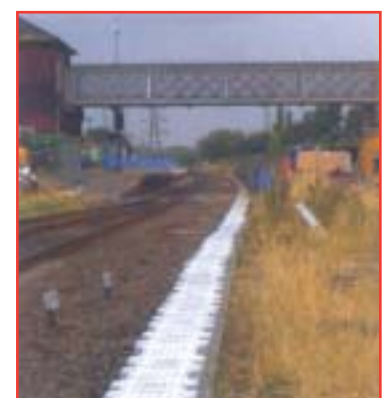
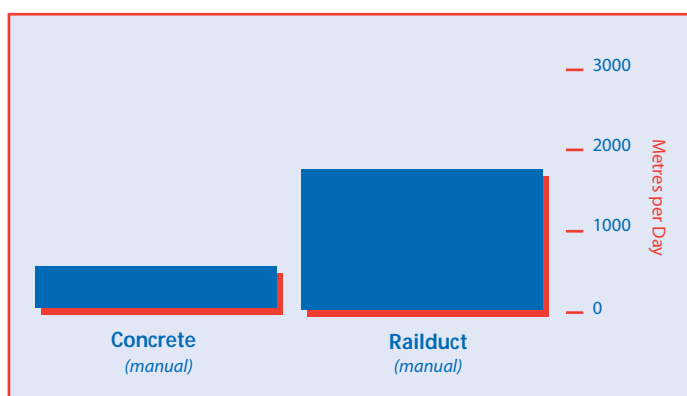
Railduct System is manufactured at Carson Industries Ltd., Roscommon, Ireland. The company holds registered firm status under I.S. EN ISO 9001: 2000.

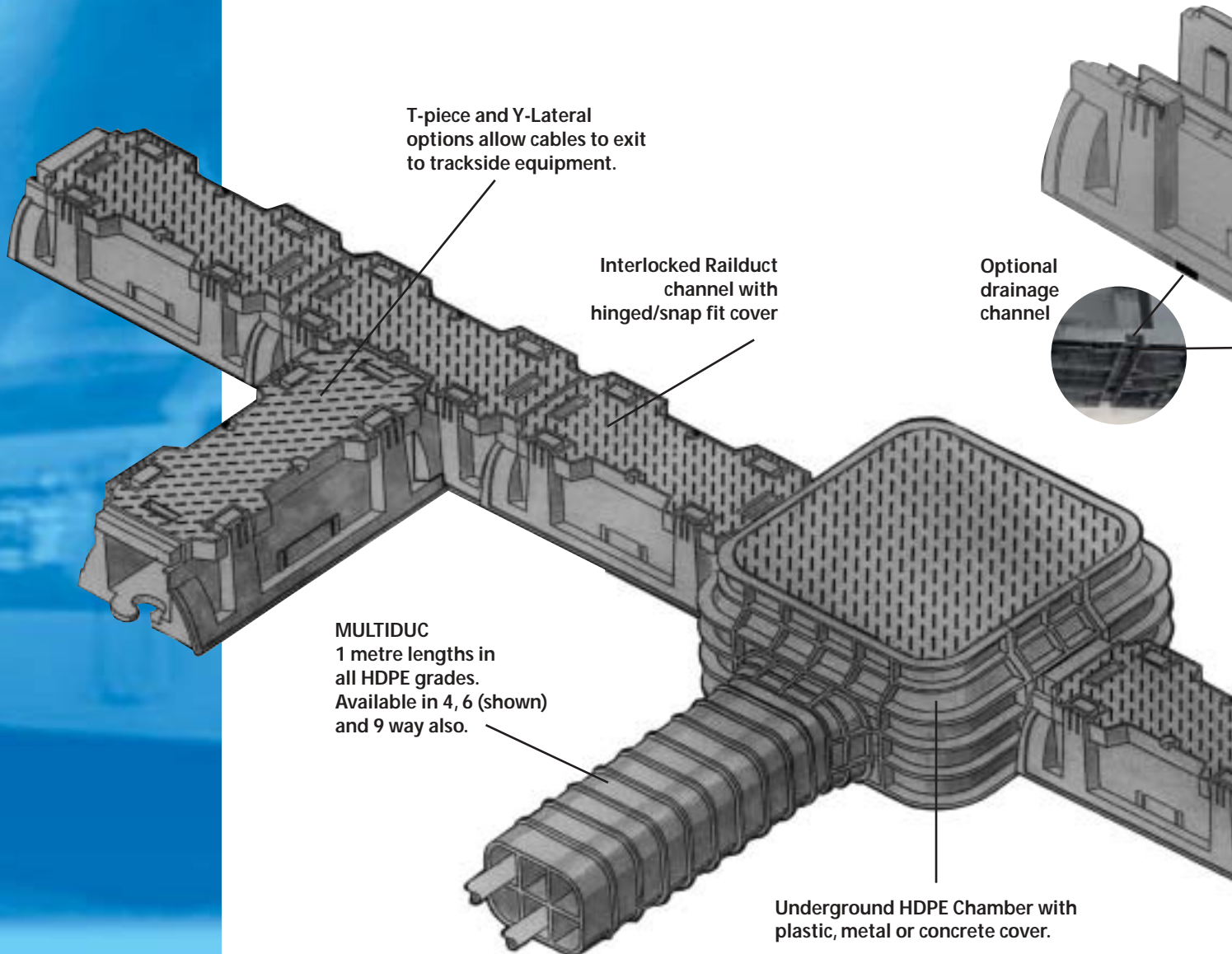
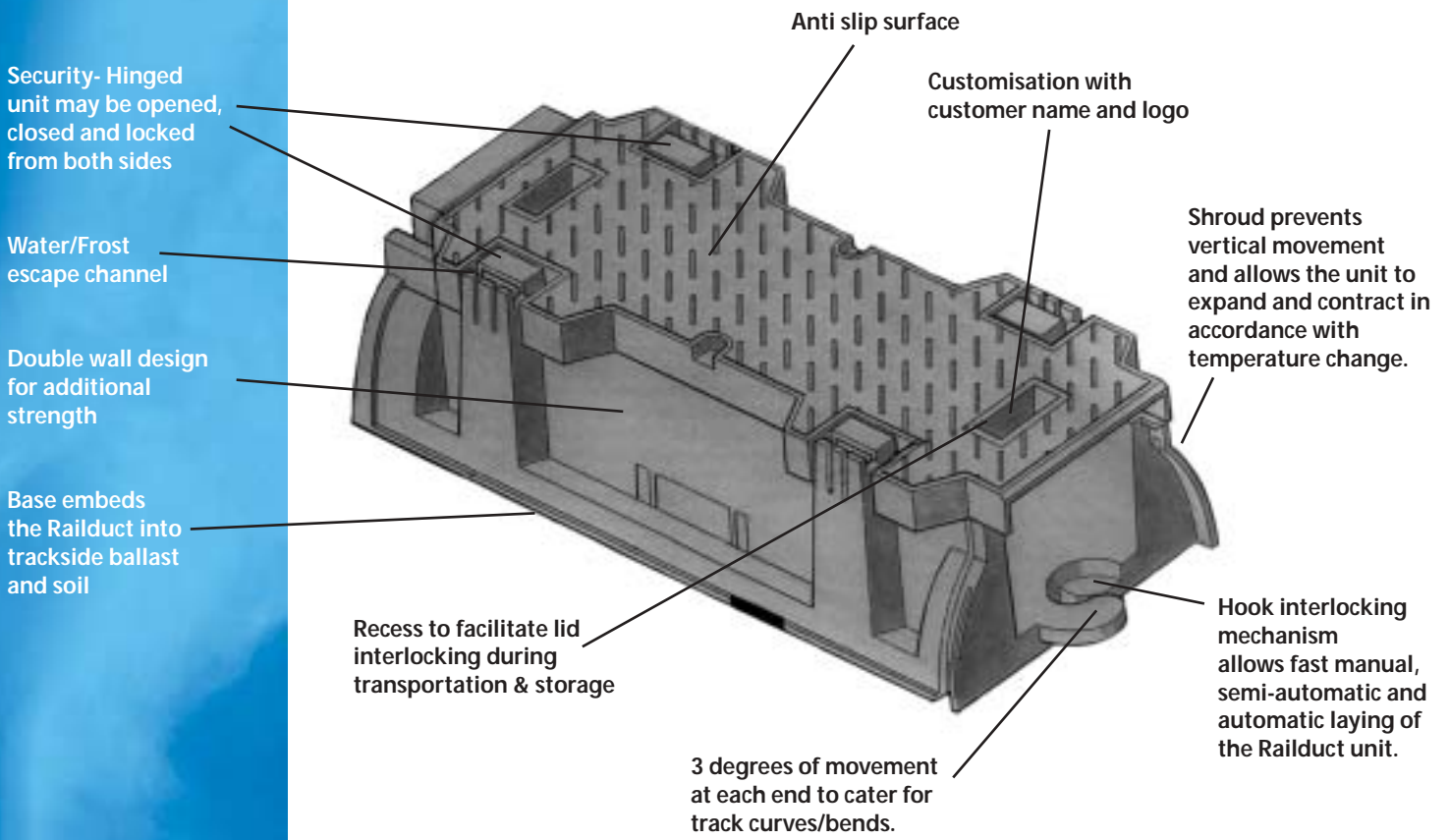
SAFETY

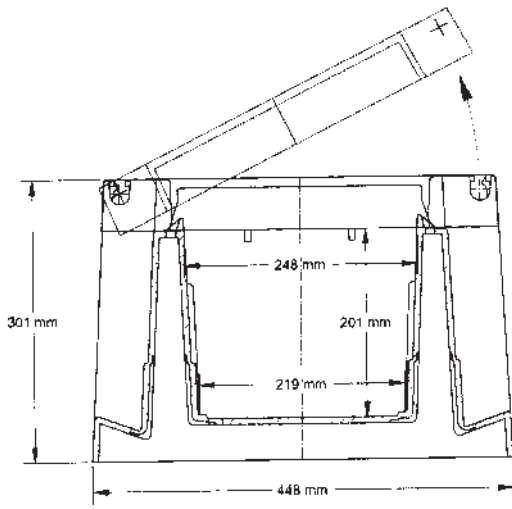
Railduct System is designed in lightweight, high strength structural foam to allow safe handling under all E.U. Health & Safety at work requirements.

FIVE MAN TEAM

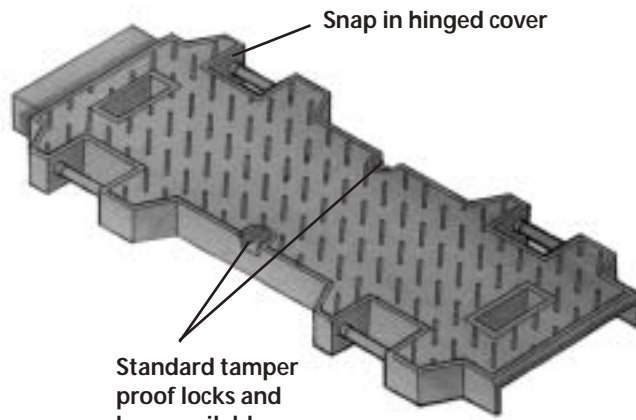
Based on current installation in the UK and Europe, concrete channel when installed manually, by a team of up to five men, results in 250 to 300 metres per day being installed. In comparison the lightweight, interlocking Railduct offers up to 1200 metres per day minimum, when manually installed. Semi-Automatic installation should allow up from 1.5km to 3km per day, with the option to install cables at the same time.



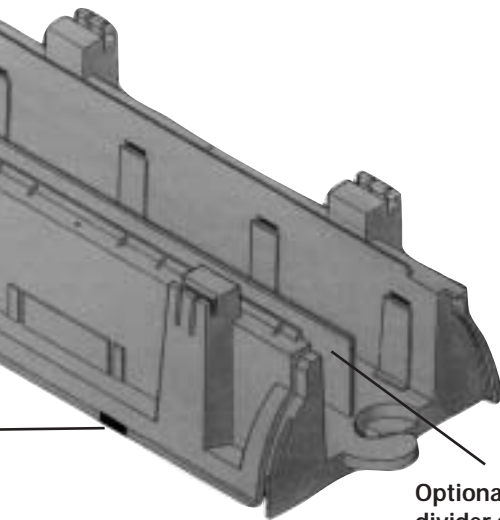




Profile 250mm



Standard tamper proof locks and keys available



Optional channel divider and brackets available for cable management



RAPID, SAFE AND SIMPLE INSTALLATION

Unique Hook Joint - assures alignment

Light (14kg) but Tough, Easy to Handle

Minimal Civil Preparation

Double Wall - high strength/stiffness

Versatile - easy to cut and interface with other components.



COVERS

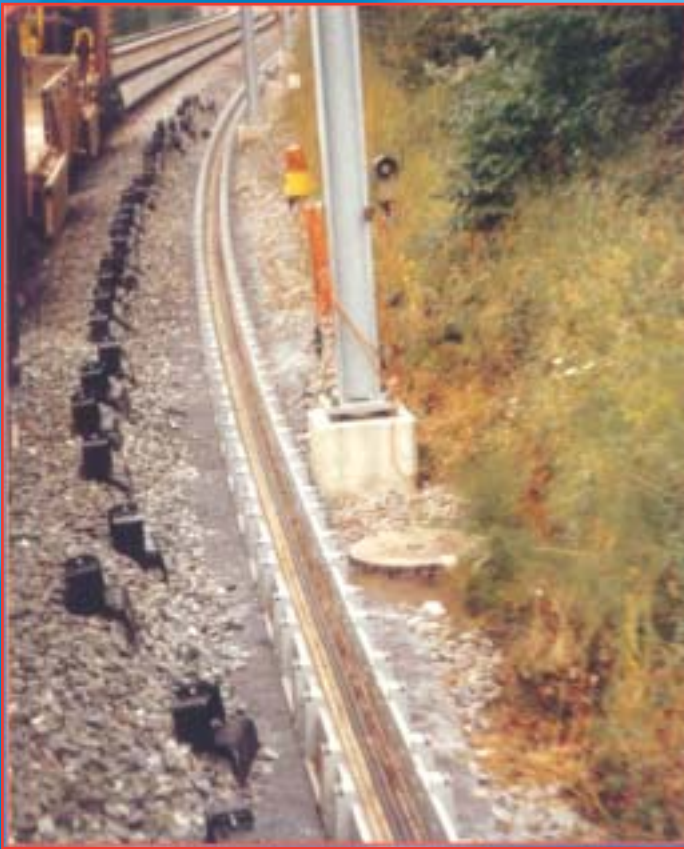
Fast to fit and **REFIT**

Full interlocking - no debris ingress

Open both sides

Lockable - for greater security

Safe, slip resistant walkway - free draining surface and thread pattern



Temple Printing Co. Ltd., Athlone, Ireland.

Carson Industries Ltd., IDA Industrial Estate, Racecourse Road, Roscommon, Ireland.
Phone: +353 90 6625922 • Fax: +353 90 6625921 • Email: sales.europe@carsonind.com • Web: www.carsonind.com

FLEXIBLE • VERSATILE • LIGHTWEIGHT • DURABLE

YOUR LOCAL DISTRIBUTOR



